

## Admitted Appetite

We successfully focus on small and medium-sized ventures, new and tenured, that have difficulty obtaining severity driven stand-alone General Liability. Here is a partial list by ISO Standard Industrial Classifications. **Please note this is not a comprehensive risk appetite list. We welcome the opportunity to discuss other classifications with you.**

### Agent Portal Products

These products are now available on the MCG agent portal:

- Contractor's Equipment
- Flow Tester
- Homebuilders
- Oilfield Welder
- Pumpers and Gaugers
- Tank Owner's Pollution

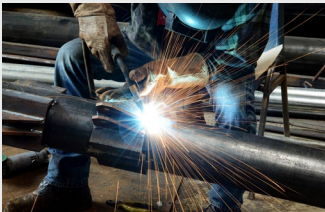
### Agricultural/Forestry



#### SIC 07 Agricultural Services

- Forestry Service
- Lawn care and landscaping services
- Logging (*general liability and umbrella only*)
- Mobile equipment repair
- Non-aerial spraying

### Energy/Mining



#### SIC 13 Oil and Gas/Energy Contractors

- Contractors equipment suppliers
- Flow tester
- Lease site construction and beautification
- Oil lease operators/non-operators
- Pumper/gauger
- Various roustabout services
- Welding

#### SIC 14 Quarrying

- Gravel digging
- Rock quarry
- Sand digging

### Wholesale Trades



#### SIC 50 Durable Goods

- Building materials
- Metal scrap dealer
- Steel and iron

#### SIC 51 Non-Durable Goods

- Flower, nursery stock, and florist
- Livestock sales
- Seed merchant

Mid-Continent's Agent Portal. It's everything you need, right at your fingertips!

#### Main Address

1437 S. Boulder Ave., Ste. 200  
Tulsa, OK 74119

#### Postal Address

P.O. Box 1409  
Tulsa, OK 74101-1409

Toll-Free: 800-722-4994  
Phone: 918-587-7221  
Fax: 918-588-1295

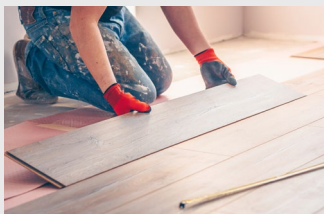
[www.mcg-ins.com](http://www.mcg-ins.com)



**MID-CONTINENT GROUP**

MEMBER OF GREAT AMERICAN INSURANCE GROUP

## Construction



### SIC 15 Building Construction

- Carpentry
- General handyman
- Residential general contractors

### SIC 16 Heavy Construction

- Commercial general contractors
- Real estate development property
- Utility line construction

### SIC 17 Specialty Trade Contractors

- Alternative energy
- Concrete
- Drywall
- Flooring
- Grading of land
- Metal erection
- Millright / machinery, equipment installation, repair
- Painting
- Septic tank
- Site clean-up
- Swimming pool contractors
- Water well drilling

\* Ineligible states for construction operations:  
AK, AL, AZ, CA, CO, DC, DE, FL, HI, IL, LA, MO,  
MS, NJ, NV, NY, OR, WA, and WI.

## Manufacturing



### SIC 24 Lumber/Wood Products

- Door sash millwork
- Fencing
- Pallet
- Sawmills
- Truss

### SIC 25 Furniture and Fixtures

- Cabinets
- Custom woodwork and millwork

### SIC 30 Rubber and Plastic Products

- Gasket
- Various household rubber and plastic goods

### SIC 33 Primary Metals

- Cable and wire goods
- Various iron and steel products

### SIC 34 Fabricated Metals Product

- Non-load bearing structural steelworks
- Small hand tools
- Various containers, boxes, and tanks

### SIC 35 Industrial and Commercial Machinery

- Construction and agricultural machinery parts
- Machine shops
- Pumps, valves, and compressors

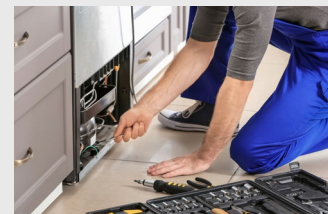
### SIC 37 Transportation Equipment

- Utility trailer

### SIC 39 Miscellaneous Manufacturing Industries

- Burial/vault
- Sign manufacturing

## Services



### SIC 72 Personal Services

- Carpet rug cleaning
- Portable toilet rentals

### SIC 73 Business Services

- Medical equipment sales, service, and repair
- Sign installation, service, and repair

### SIC 76 Miscellaneous Repairs

- Boiler
- Electronic equipment installation, service, and repair
- Household appliance service and repair
- Office machine installation, inspection, and repair

## ALSO AVAILABLE

### Non-Admitted Appetite

Mid-Continent also offers stand-alone General Liability opportunities to the Non-Admitted market.

Please ask your Mid-Continent representative for more information.

**Mid-Continent Group** - Providing insurance solutions since 1947

For agent/broker distribution only. Product not available in all states. Agent portal may not be available at all times. Coverage description is summarized. Refer to the actual policy for a full description of applicable terms, conditions, limits and exclusions. Policies are underwritten by Mid-Continent Casualty Company, an authorized insurer in all states except AK, CA, CT, DE, HI, MA, ME, NH, NV, NJ, NY, VT, WV, and WI; Oklahoma Surety Company, an authorized insurer in AR, KS, LA, OH, OK and TX; and Mid-Continent Assurance Company, an authorized insurer in ID, LA, MO, NE, ND, OH, OK, TX and VA. This advertising is not intended as a solicitation or offer to sell any insurance product in any jurisdiction in which such solicitation or offer, or the sale or purchase of the described insurance product would be unlawful under the insurance laws and regulations of such jurisdiction. This information is intended for use by licensed insurance producers. © 2020 Mid-Continent Casualty Company. All rights reserved. 4361-MCG (Non-Admitted 5/20)



**MID-CONTINENT GROUP**

MEMBER OF GREAT AMERICAN INSURANCE GROUP